

5.4 SITE CATEGORY: HISTORIC INFILL

Historic grain infill sites are generally set within:

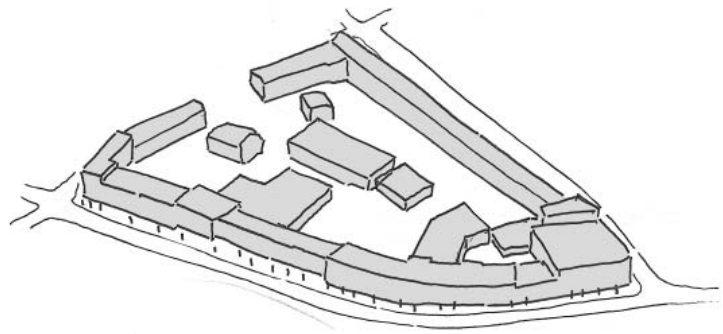
- Well defined urban blocks
- A 'fine' urban grain of narrow frontages
- Conservation areas, or the vicinity of listed buildings
- Surrounding buildings 2-4 storeys
- A large number of the sites are within the Old Town area.

The sites are generally sized:

0.05 to 0.6 ha.

Total area of all the Historic Grain Infill sites:

2.67ha.



Typical Historic Grain Infill site and its context.

5.5 SITE CATEGORY: MID-RISE

Medium rise sites are generally set within:

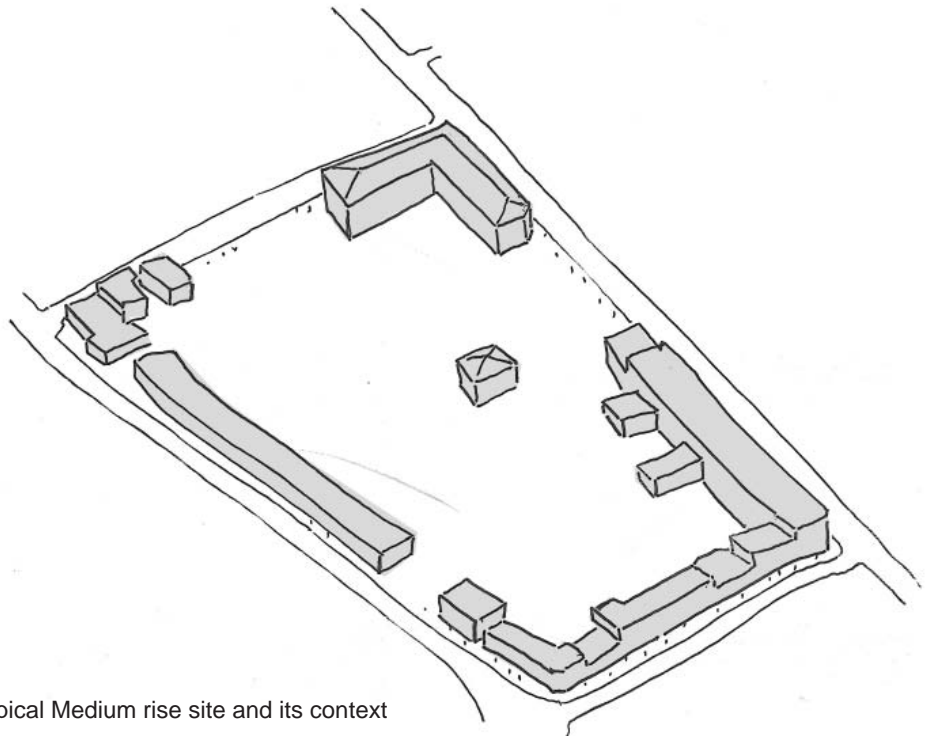
- a 'broken' or incomplete block structure
- Surrounding buildings of a range of heights from 2 up to 10 storeys
- Located all around the peripheral areas of the CMC.

The sites are generally sized:

0.15 to 1.2 ha.

Total area of all the Medium Rise sites:

10.0ha.



Typical Medium rise site and its context

5.6 SITE CATEGORY: ADJACENT TO INFRASTRUCTURE

Sites adjacent to infrastructure make up a number of the opportunity sites, they are generally set:

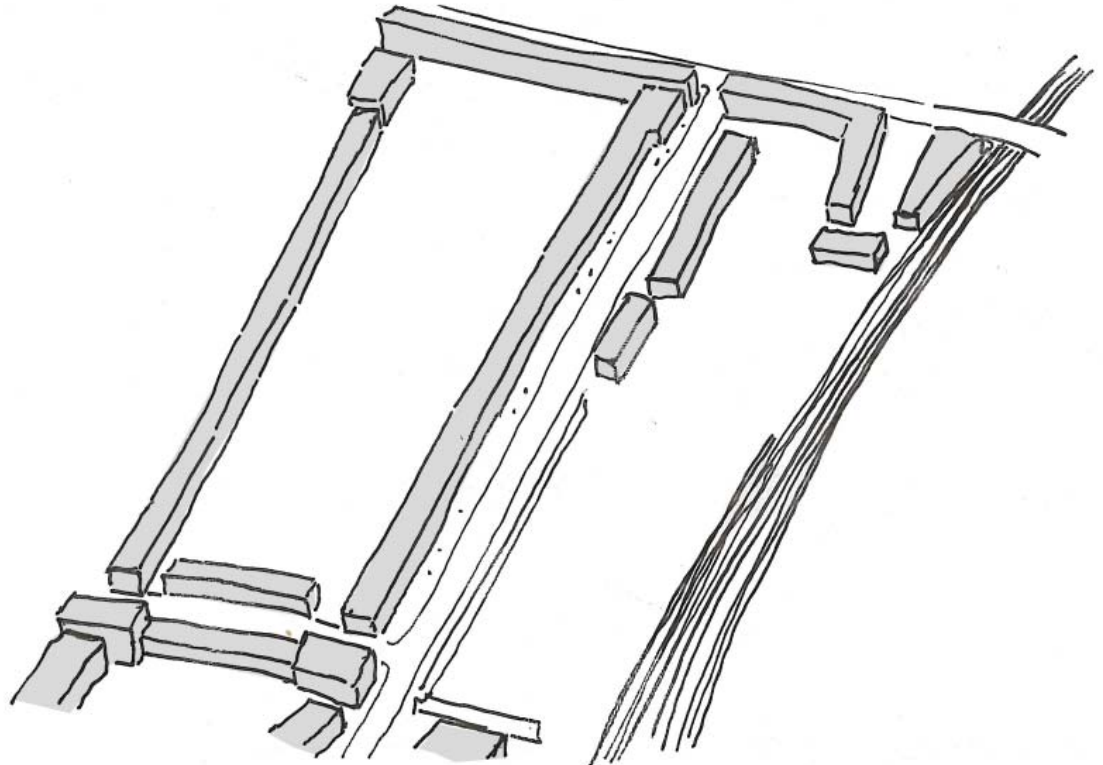
- On the incomplete edges of defined block structure
- Amid surrounding buildings of mostly 2-4 storeys

The sites are generally sized:

0.15 to 0.8 ha.

Total area of all the site adjacent to infrastructure:

4.19ha.



Typical Site Adjacent to Infrastructure and its context

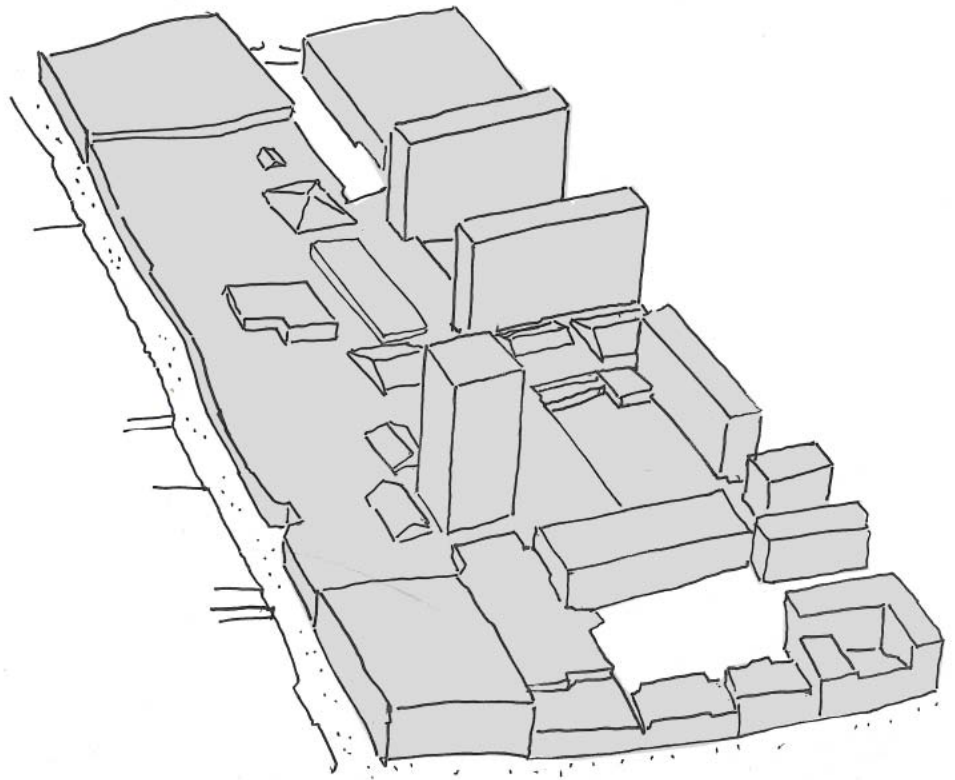
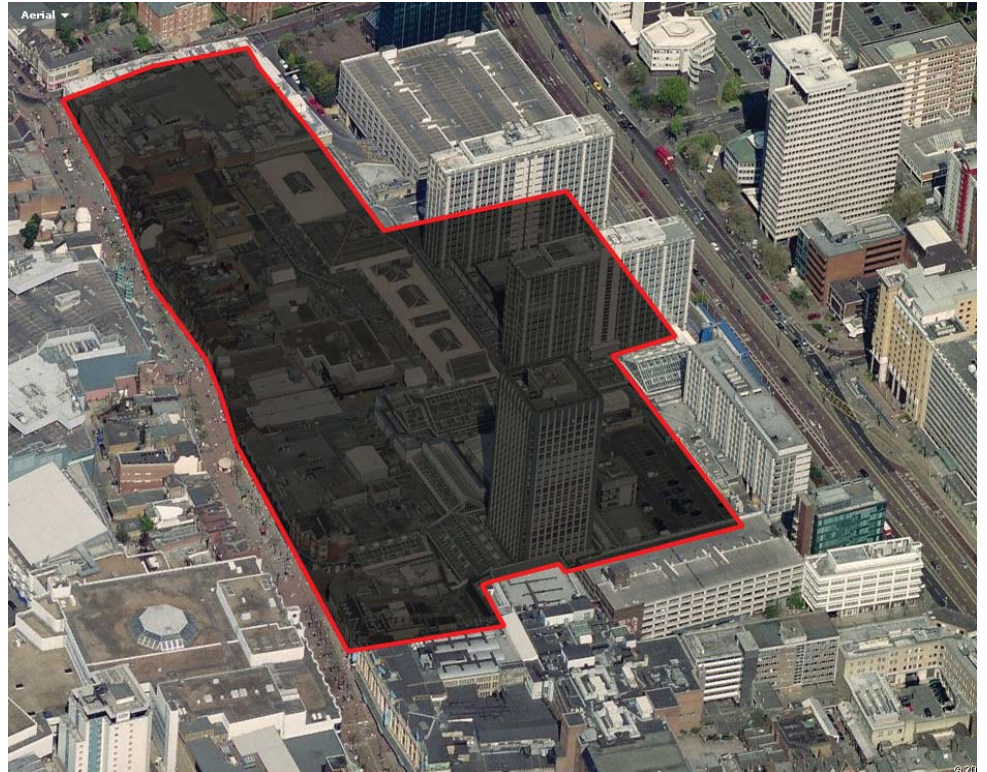
5.7 SITE CATEGORY: SHOPPING CENTRE

Shopping centre sites are generally set within:

- Very large urban blocks
- A full range of building heights
- large single ownerships

The sites are generally large sized from:
1 to 4.3 ha.

Total area of all Shopping centre sites:
12.32ha.



Typical shopping centre site and its context

5.8 SITE CATEGORY: TALL BUILDING SITES

Tall building sites are mostly (but not entirely) located within the new town, they are generally set in area with:

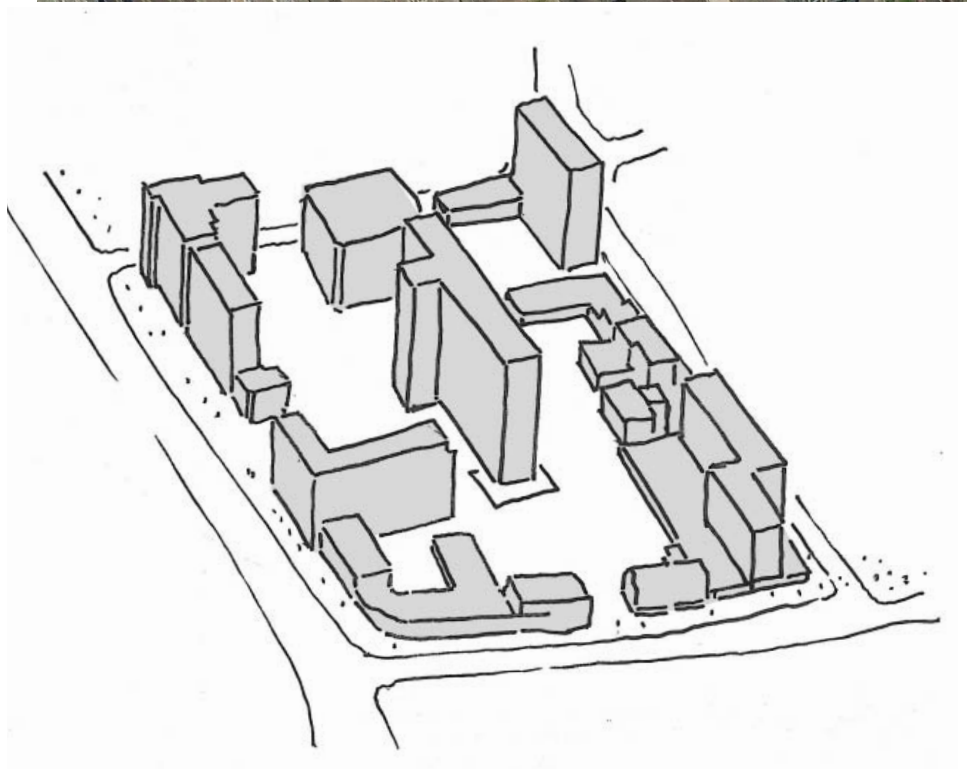
- Little block structure, more a series of elements
- amid surrounding buildings of a range of heights up to 25 storeys

The sites are generally sized:

0.2 to 2.3ha.

Total area of all sites adjacent to infrastructure:

11.25ha.



Typical tall building site and its context