

CMT – JUNE 2024

Assistant Chief Executive (LGA)
Elaine Jackson
Marie Snelling (Interim)

Executive Officer
Joanne Negus

Chief People Officer
Dean Shoemith

Director of Digital and Resident Access
Paul Golland

Director of Public Health
Vacant

Director of Policy, Programmes & Performance
David Courcoux

Director of Transformation
Sharon Godman

Head of Learning and Organisational Development
Grace Addy

Head of Digital Operations
Sarah Cullen

Public Health Consultant
Jack Bedeman

Head of Programmes and Performance
Caroline Bruce

Programme Manager
Barbara Grant

Head of Human Resources – Resources and ACE
Gillian Bevan

Acting Head of Digital Services, Access and Reach
Michael Bishop

Public Health Consultant
James Moore

Head of Strategy and Policy
Helen Reeves

Financial Analyst
Jonathan Ross

Head of Human Resources SCRER and Housing
Jennifer Sankar

Head of Resident Contact
Lisa Wheatley

Public Health Locum Consultant
Andrea Fallon

Head of Elections
Seth Alker

Head of Human Resources Children's and Adults
Debbie Calliste

Head of Bereavement and Registrars
Kevin Pilkington

Public Health Consultant
Ahimza Nagasivam

Head of Communications
Susie Rundle

Head of Recruitment
Katie Wallace

Acting Head of Specialist Systems
Jon Martin

Public Health Consultant
Fatai Ogunlayi

Acting Head of Human Resources – Systems and Payroll
Tina Rekhi

**Corporate Director
Adults, Social Care and Health
Annette McPartland**

**Executive Officer
Venisha Carr**

**Director
Director of Operations
Simon Robson**

**Head of Adult Safeguarding & Assurance
Clement Guerin**

**Head of Service Older People
Sean Olivier**

**Head of Service & Principal Social Worker Adult
Mental Health
Valentine Nweze**

**Head of Provider Services
Simon Wadsworth**

**Head of Business & Service Compliance
Caroline Baxter**

**Head of Transitions & 18 to 65 years Disability
Azuka Agbai**

**Director
Director of Commissioning, Policy &
Improvement
Bianca Byrne**

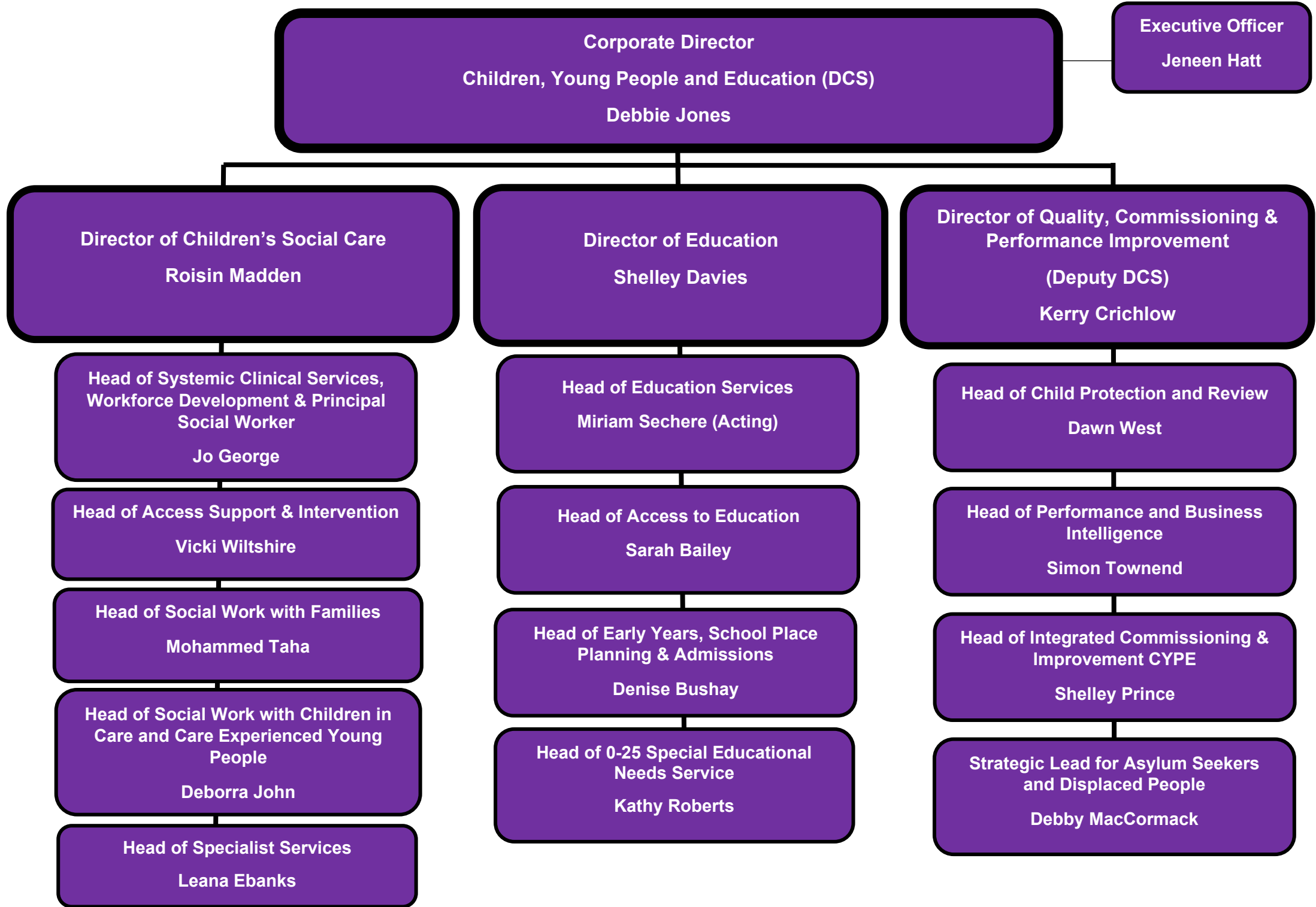
**Strategic Commissioning and Improvements
Leanne Bobb**

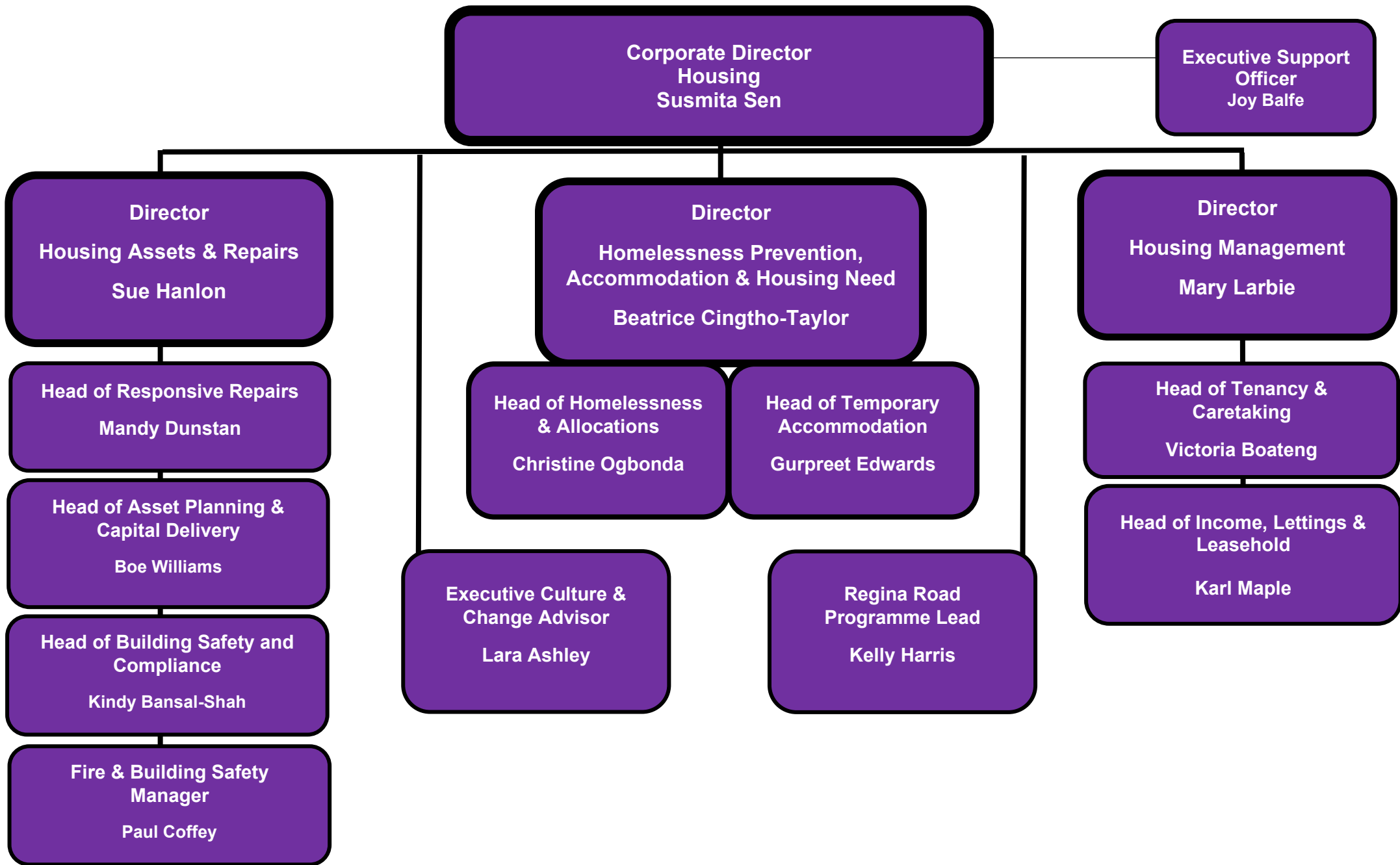
**Improvement
Richard Eyre**

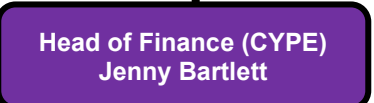
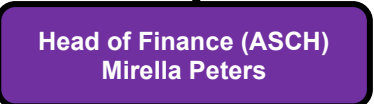
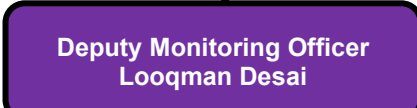
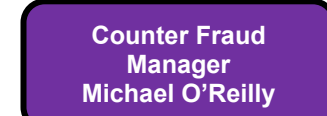
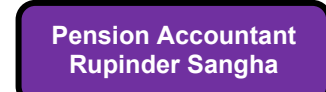
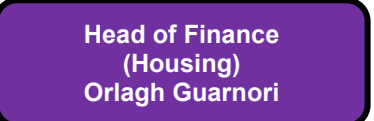
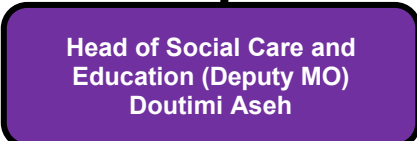
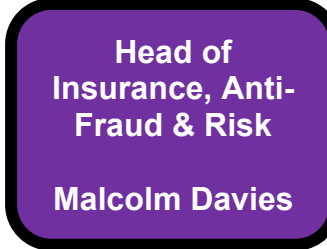
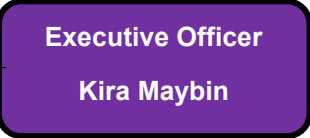
**Adult Placement & Brokerage & Market
Management
Stephen Hopkins**

**Deputy Director, One Croydon
Laura Jenner**

**Community Equipment Services
Paul Kouassi**







Corporate Director
Sustainable Communities, Regeneration & Economic Recovery
Nick Hibberd

Executive Officer
Anne Lackenby

Director
Planning & Sustainable Regeneration
Heather Cheesbrough

Director
Culture & Community Safety
Kristian Aspinall

Director
Sustainable Communities
Karen Agbabiaka

Head of Development Management
Nicola Townsend

Head of Strategic Transport
Dominic Millen

Head of Building Control
Ric Patterson

Head of Spatial Planning, Growth Zone & Regeneration
Steve Dennington

Head of Employment, Skills & Economic Development
Carol Squires

Head of Culture, Leisure & Libraries
Stephanie Wilson

Head of Violence Reduction Network
Christopher Rowney

Co-Heads of Croydon Music & Arts
Lucie Vezey & Jon Regan

Strategic Lead for Resilience & Emergency Planning
Natalia Proctor

Head of Coroners Service
Stephen Rowan

Head of Environment Services & Sustainable Neighbourhoods
Charles Baker

Head of Highways & Parking
Jayne Rusbatch

Head of Environmental Health, Trading Standards & Licensing
Michael Goddard

Head of Independent Travel
Daniel Shepherd