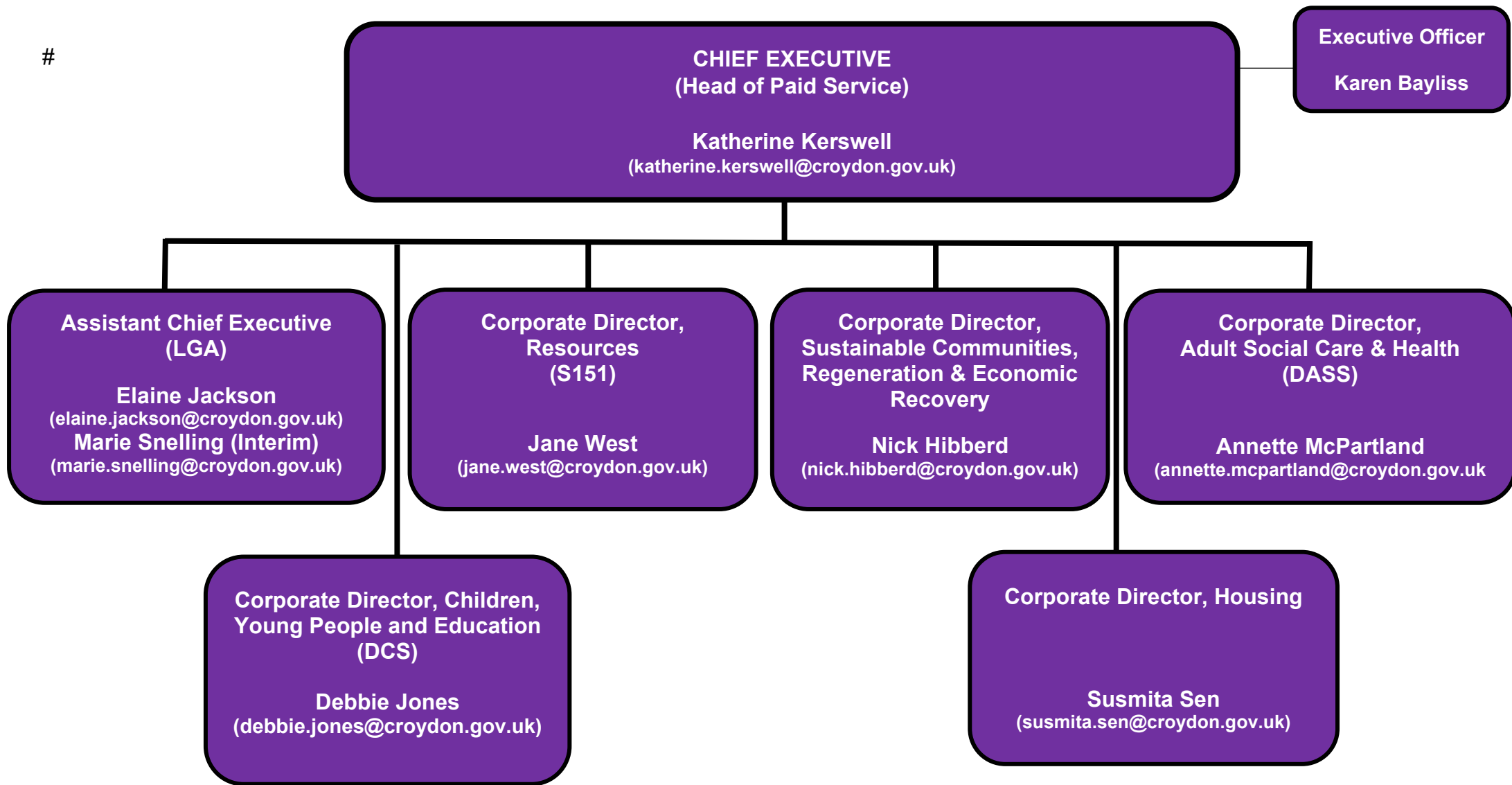


#



**CMT – OCT 2024**

**Assistant Chief Executive (LGA)**  
Elaine Jackson  
Marie Snelling (Interim)

**Executive Officer**  
Joanne Negus

**Chief People Officer**  
Dean Shoesmith

**Director of Digital and Resident Access**  
Paul Golland

**Director of Public Health**  
Vacant

**Director of Policy, Programmes & Performance**  
Carol Squires

**Director of Transformation**  
Sharon Godman

**Head of Learning and Organisational Development**  
Grace Addy

**Head of Digital Operations**  
Sarah Cullen

**Public Health Consultant**  
Jack Bedeman

**Head of Programmes and Performance**  
Caroline Bruce

**Programme Manager**  
Barbara Grant

**Head of Human Resources – Resources and ACE**  
Gillian Bevan

**Acting Head of Digital Services, Access and Reach**  
Michael Bishop

**Public Health Consultant**  
James Moore

**Head of Strategy and Policy**  
Helen Reeves

**Financial Analyst**  
Jonathan Ross

**Head of Human Resources SCRER and Housing**  
Jennifer Sankar

**Head of Resident Contact**  
Lisa Wheatley

**Public Health Locum Consultant**  
Andrea Fallon

**Head of Elections**  
Seth Alker

**Head of Human Resources Children's and Adults**  
Debbie Calliste

**Acting Head of Specialist Systems**  
Jon Martin

**Public Health Consultant**  
Ahimza Nagasivam

**Head of Communications**  
Susie Rundle

**Head of Recruitment**  
Katie Wallace

**Acting Head of Human Resources – Systems and Payroll**  
Tina Rekhi

**Public Health Consultant**  
Fatai Ogunlayi

**Corporate Director  
Adults, Social Care and Health  
Annette McPartland**

**Executive Officer  
Venisha Carr**

**Director  
Director of Operations  
Simon Robson**

**Head of Adult Safeguarding & Assurance  
Clement Guerin**

**Head of Service Older People  
Sean Olivier**

**Head of Service & Principal Social Worker Adult  
Mental Health  
Valentine Nweze**

**Head of Provider Services  
Simon Wadsworth**

**Head of Business & Service Compliance  
Caroline Baxter**

**Head of Transitions & 18 to 65 years Disability  
Azuka Agbai**

**Director  
Director of Commissioning, Policy &  
Improvement  
Bianca Byrne**

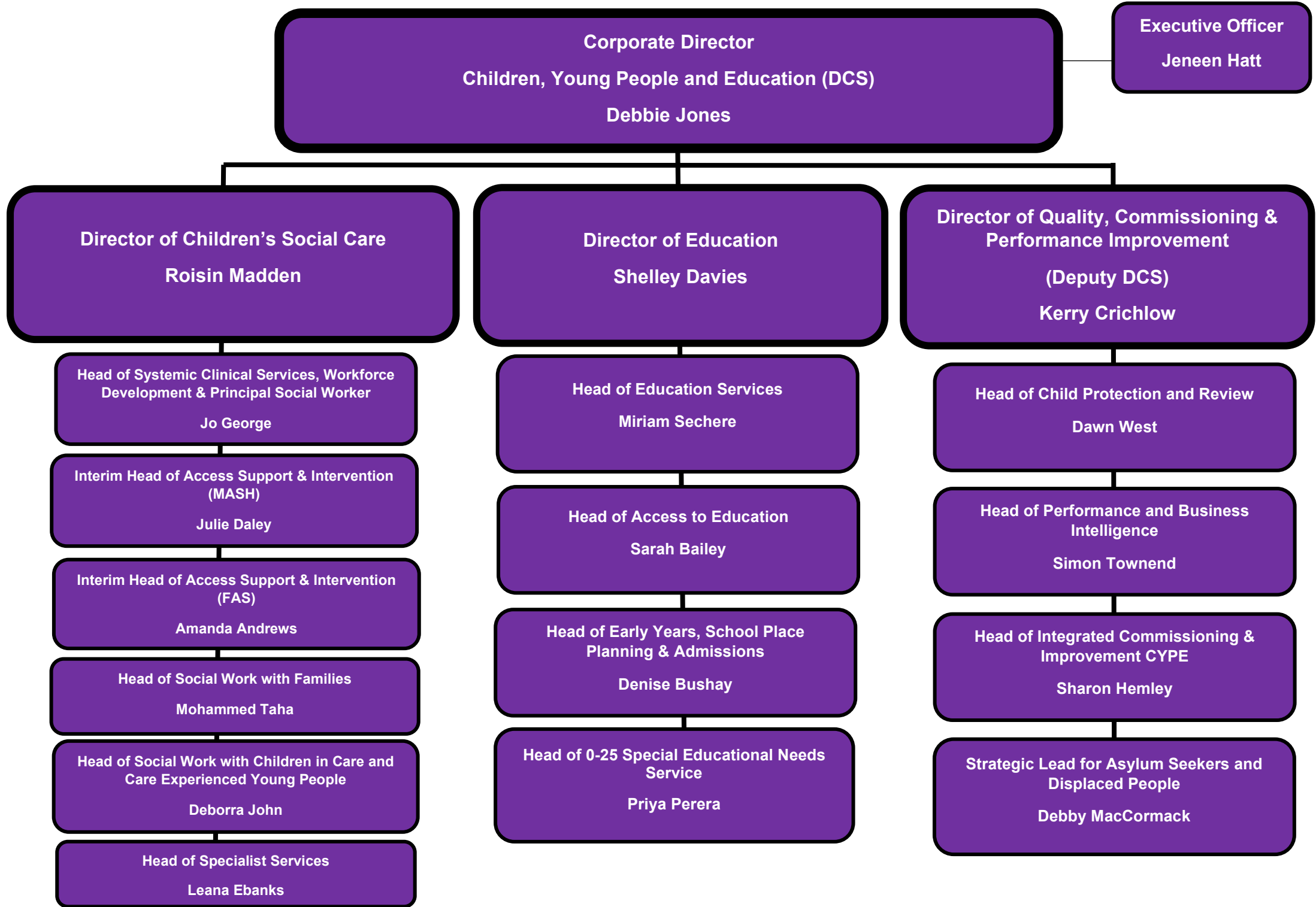
**Strategic Commissioning and Improvements  
Leanne Bobb**

**Improvement  
Richard Eyre**

**Adult Placement & Brokerage & Market  
Management  
Stephen Hopkins**

**Deputy Director, One Croydon  
Rachel Flagg**

**Community Equipment Services  
Paul Kouassi**



**Executive Officer  
Vacant**

**Corporate Director  
Housing  
Susmita Sen**

**Strategic Support  
Officer  
Lisa McFadden**

**Director  
Housing Assets & Repairs  
Sue Hanlon**

**Director  
Homelessness Prevention,  
& Accommodation  
Beatrice Cingtho-Taylor**

**Director  
Housing Management  
Mary Larbie**

**Transformation Change  
and Customer Learning  
Lead  
Lara Ashley**

**Director  
Development & New  
Supply  
Vacant**

**Head of Responsive Repairs  
Mandy Dunstan**

**Head of Homelessness &  
Allocations  
Christine Ogbonda**

**Head of Tenancy  
Management  
Victoria Boateng**

**Head of Change Assurance  
and Performance  
Cathy McCarthy**

**Regina Road Project  
Director  
Frank Klepping**

**Head of Asset Planning & Capital  
Delivery  
Boe Williams**

**Head of Temporary  
Accommodation & Support  
Service  
Vacant**

**Head of Income Recovery,  
Rent Accounting, Lettings &  
Leasehold Services  
Karl Maple**

**HR People & Culture Lead  
Sejal Gillam**

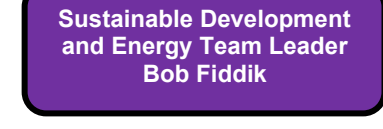
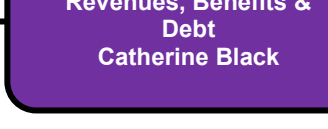
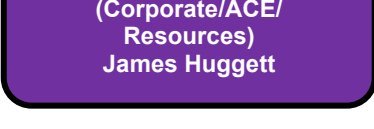
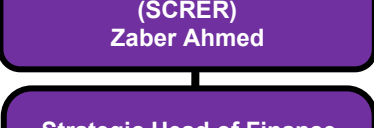
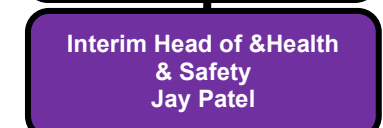
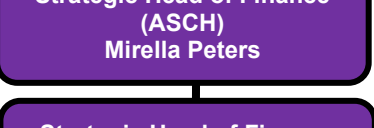
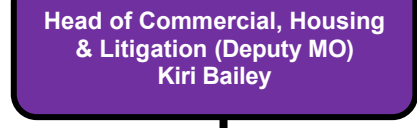
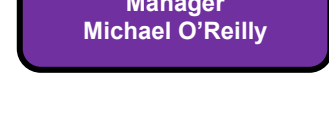
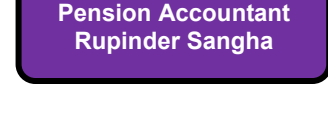
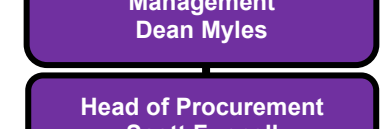
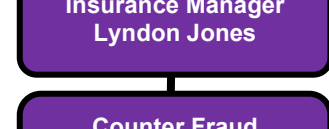
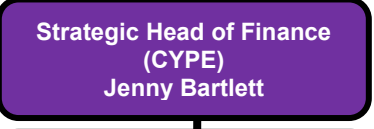
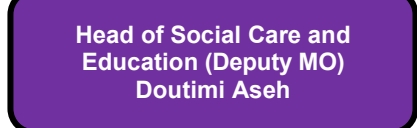
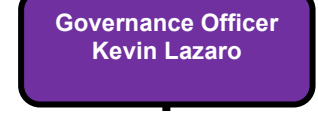
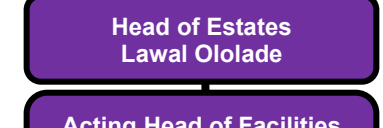
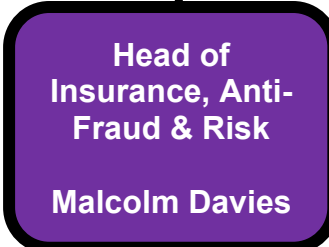
**Regeneration Lead  
David Baptiste**

**Head of Compliance  
Kindy Bansal-Shah**

**Housing Solutions  
Transformation Lead  
Lee Georgiou**

**Head of Contract Centre,  
Estates & Environment  
Services  
Nick Spenceley**

**Fire & Building Safety Manager  
Paul Coffey**



**Corporate Director**  
**Sustainable Communities, Regeneration & Economic Recovery**  
**Nick Hibberd**

**Executive Officer**  
**Anne Lackenby**

**Director**  
**Planning & Sustainable Regeneration**  
**Heather Cheesbrough**

**Director**  
**Culture & Community Safety**  
**Kristian Aspinall**

**Director**  
**Sustainable Communities**  
**Karen Agbabiaka**

**Head of Development Management**  
**Nicola Townsend**

**Head of Strategic Transport**  
**Dominic Millen**

**Head of Building Control**  
**Ric Patterson**

**Head of Spatial Planning, Growth Zone & Regeneration**  
**Steve Dennington**

**Head of Employment, Skills & Economic Development**  
**Carol Squires (on secondment)**

**Head of Culture, Leisure & Libraries**  
**Stephanie Wilson**

**Head of Violence Reduction Network**  
**Christopher Rowney**

**Co-Heads of Croydon Music & Arts**  
**Lucie Vezey & Jon Regan**

**Strategic Lead for Resilience & Emergency Planning**  
**Natalia Proctor**

**Head of Coroners Service**  
**Stephen Rowan**

**Head of Registrars & Bereavement**  
**Kevin Pilkington**

**Head of Environment Services & Sustainable Neighbourhoods**  
**Charles Baker**

**Head of Highways & Traffic**  
**Brian Fitzpatrick**

**Head of Parking**  
**Chris Wortley**

**Head of Environmental Health, Trading Standards & Licensing**  
**Michael Goddard**

**Head of Independent Travel**  
**Daniel Shepherd**