

CMT – FEB 2025

**Assistant Chief Executive
Elaine Jackson**

**Executive Officer
Joanne Negus**

**Chief People Officer
Dean Shoemith**

**Head of HR Business
Partnering
Gillian Bevan**

**Head of HR Operations
Paul Ewing**

**Head of Workforce Strategy
Deborah Cook**

**Director of Digital and
Resident Access
Paul Golland**

**Head of Digital
Operations
Sarah Cullen**

**Acting Head of Digital
Services, Access and
Reach
Michael Bishop**

**Acting Head of Specialist
Systems
Jon Martin**

**Director of Policy,
Programmes &
Performance
Carol Squires**

**Head of Programmes
and Performance
Caroline Bruce**

**Head of Strategy and
Policy
Helen Reeves**

**Head of Elections
Seth Alker**

**Head of
Communications
Susie Rundle**

**Director of
Transformation
Sharon Godman**

**Head of Resident
Contact
Lisa Wheatley**

**Transformation Finance
Lead
Alan Layton**

**Corporate Director
Adult Social Care and Health
Annette McPartland**

**Executive Officer
Venisha Carr**

**Director
Director of Adult Social Care Operations
Simon Robson**

**Head of Adult Safeguarding & Quality Assurance
Clement Guerin**

**Head of Service Older Adult Services
Sean Olivier**

**Head of Adult Mental Health Social Care
Valentine Nweze**

**Head of Provider Services
Simon Wadsworth (substantive post holder)
(post currently covered by Paul Wallingford)**

**Head of Business & Service Compliance
Caroline Baxter**

**Head of Transitions & 18 to 65 years Disability
Azuka Agbai**

**Director of Public Health (Acting)
Andrea Fallon**

**Public Health Consultant
Jack Bedeman**

**Public Health Consultant
James Moore**

**Public Health Locum Consultant
Andrea Fallon**

**Public Health Consultant
Ahimza Nagasivam**

**Public Health Consultant
Fatai Ogunlayi**

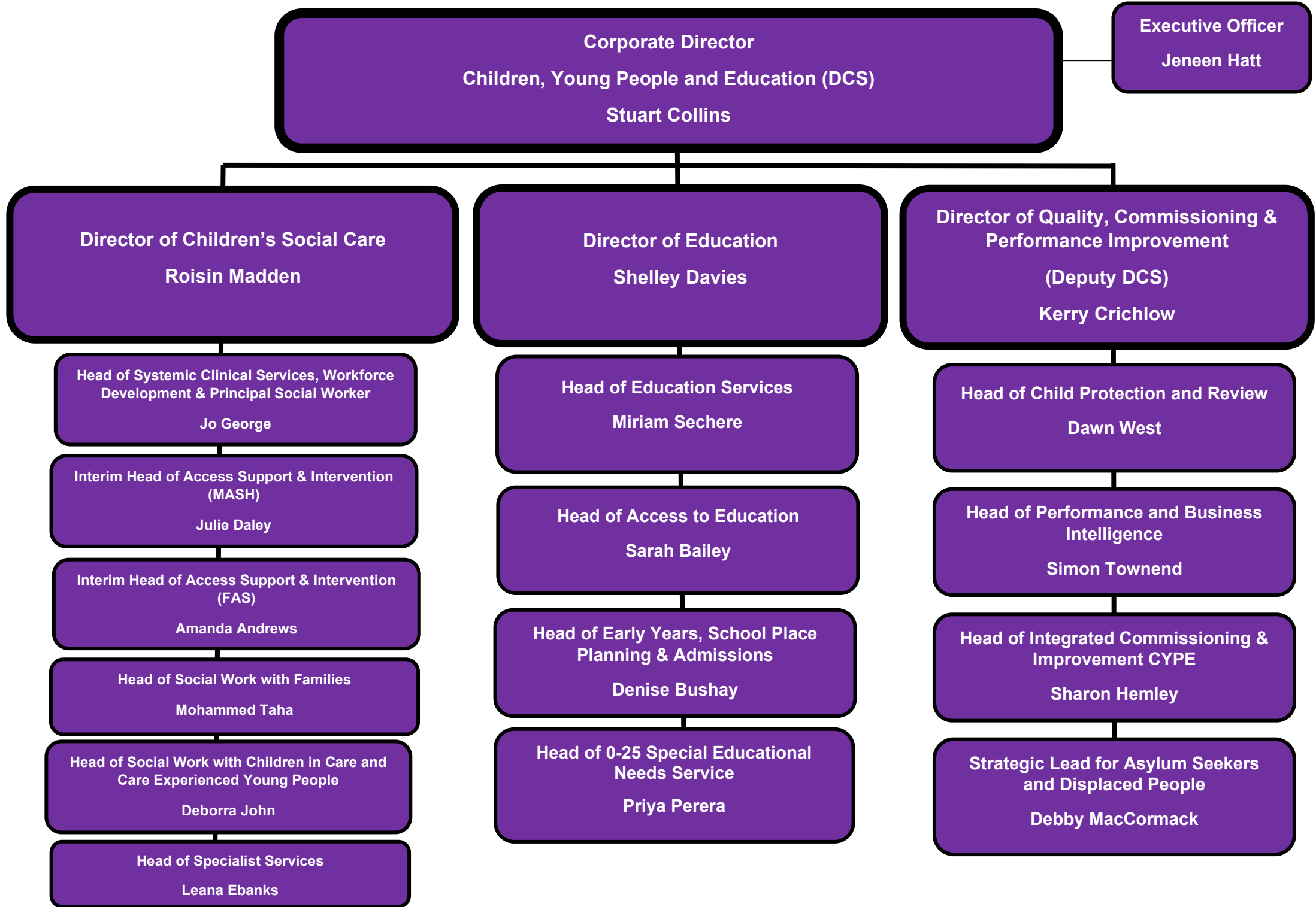
**Director
Director of Adult Social Care Commissioning,
Policy & Improvement
Bianca Byrne**

**Head of Strategic Commissioning and Improvement
Leanne Bobb**

**Head of Improvement – Shadab Ahmed
(Richard Eyre is substantive post holder and is reporting directly to the Corporate Director as Strategic Lead for Operating Model, Performance &**

**Head of Adult Placement, Brokerage & Market Management
Stephen Hopkins**

**One Croydon – Rachel Flagg (NHS employee),
Director, Integrated Care Partnership Development
South West London Integrated Care System**



**Executive Officer
Vacant**

**Corporate Director
Housing
Susmita Sen**

**Strategic Support
Officer
Lisa McFadden**

**Director
Housing Assets & Repairs
Sue Hanlon**

**Director
Homelessness Prevention,
& Accommodation
Beatrice Cingtho-Taylor**

**Director
Housing Management
Mary Larbie**

**Transformation Change
and Customer Learning
Lead
Lara Ashley**

**Director
Development & New
Supply
Vacant**

**Head of Responsive Repairs
Mandy Dunstan**

**Head of Homelessness &
Allocations
Christine Ogbonda**

**Head of Tenancy
Management
Victoria Boateng**

**Head of Change Assurance
and Performance
Cathy McCarthy**

**Regina Road Project
Director
Frank Klepping**

**Head of Asset Planning & Capital
Delivery
Boe Williams**

**Head of Temporary
Accommodation & Support
Service
Vacant**

**Head of Income Recovery,
Rent Accounting, Lettings &
Leasehold Services
Karl Maple**

**HR People & Culture Lead
Sejal Gillam**

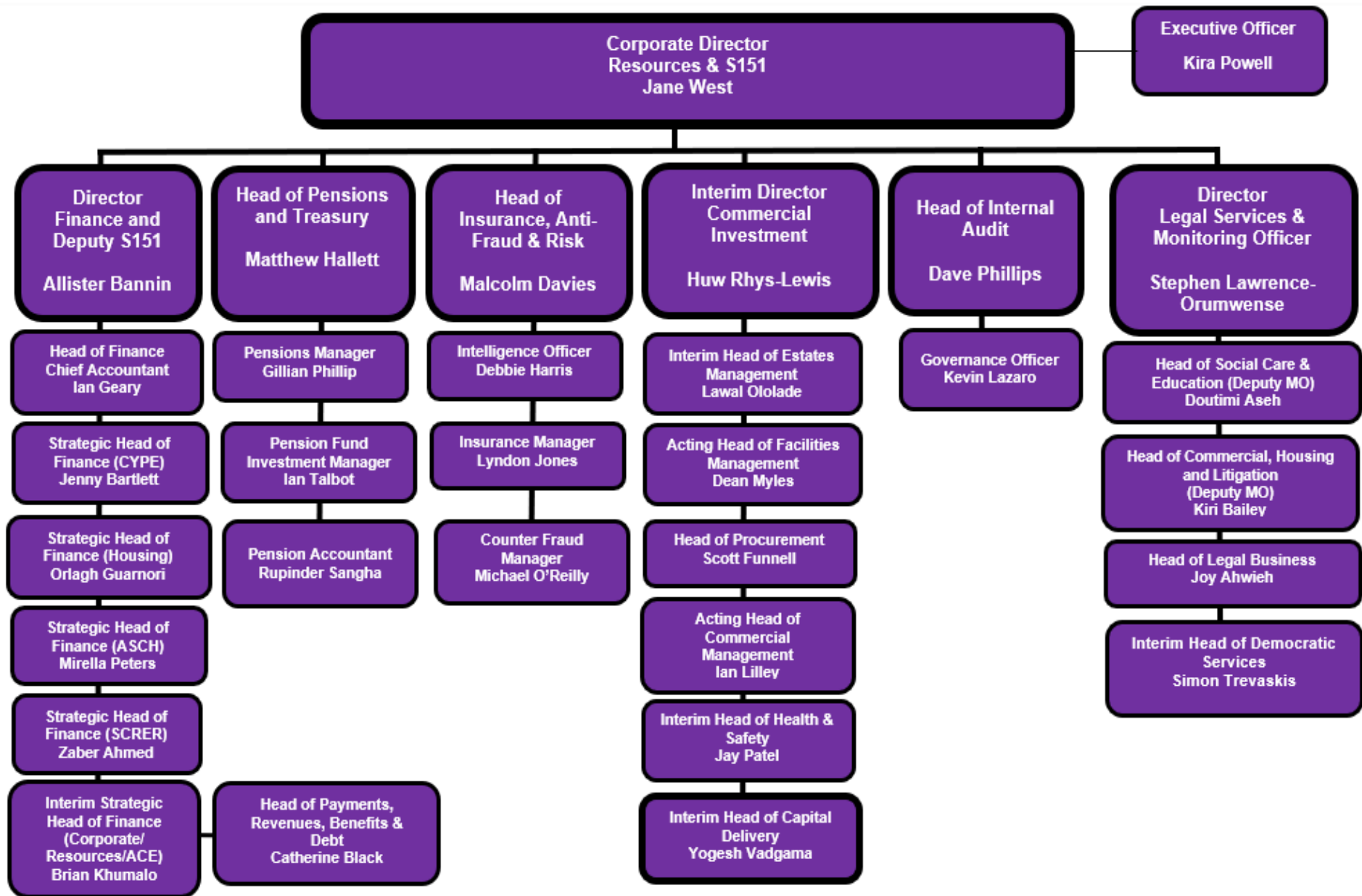
**Regeneration Lead
David Baptiste**

**Head of Compliance
Kindy Bansal-Shah**

**Housing Solutions
Transformation Lead
Lee Georgiou**

**Head of Contract Centre,
Estates & Environment
Services
Nick Spenceley**

**Fire & Building Safety Manager
Paul Coffey**



Corporate Director
Sustainable Communities, Regeneration & Economic Recovery
Nazeya Hussain

Executive Officer
Anne Lackenby

Director
Planning & Sustainable Regeneration
Heather Cheesbrough

Director
Culture & Community Safety
Kristian Aspinall

Director
Sustainable Communities
Karen Agbabiaka

Head of Development Management
Nicola Townsend

Head of Strategic Transport
Sally Crew

Head of Building Control
Ric Patterson

Head of Spatial Planning, Growth Zone & Regeneration
Steve Dennington

Head of Employment, Skills & Economic Development
Marlon Bruce

Head of Culture, Leisure & Libraries
Stephanie Wilson

Head of Violence Reduction Network
Christopher Rowney

Co-Heads of Croydon Music & Arts
Lucie Vezey & Jon Regan

Strategic Lead for Resilience & Emergency Planning
Natalia Proctor

Head of Coroners Service
Giles Adey

Head of Registrars & Bereavement
Kevin Pilkington

Head of Environment Services & Sustainable Neighbourhoods
Charles Baker

Head of Highways & Traffic
Brian Fitzpatrick

Head of Parking
Chris Wortley

Head of Environmental Health, Trading Standards & Licensing
Michael Goddard

Head of Independent Travel
Daniel Shepherd