

Climate Action External Forum - Update

Updates

Climate Action Plan (CAP) approved by cabinet in June 2025

There is a climate action plan (summarised) and a climate work plan (detailed)

Key themes of the carbon neutral plan have been retained

Included actions based on current opportunities and establishing baselines

Annual Report, Annual Review and Revision

Croydon Climate Action Plan

Croydon's Climate Action Plan 2030 has been formally approved. This builds on our earlier Carbon Neutral Action Plan and responds to the challenges which all councils are facing in delivering actions to address climate change.

[Download the Croydon Climate Action Plan 2030 \(PDF, 425KB\)](#)

[Download the Croydon Climate Action Work Plan \(Excel, 50KB\)](#)

Progress so far

We have the procurement for LAEP(Local Area Energy Plan) in progress. We aim to have a contract signed by December

The Climate Risk Assessment is commissioned, and we are in the midst of developing Croydon Climate Risk maps.

Climate Literacy has been initiated in the council with a Climate Fresk held every month

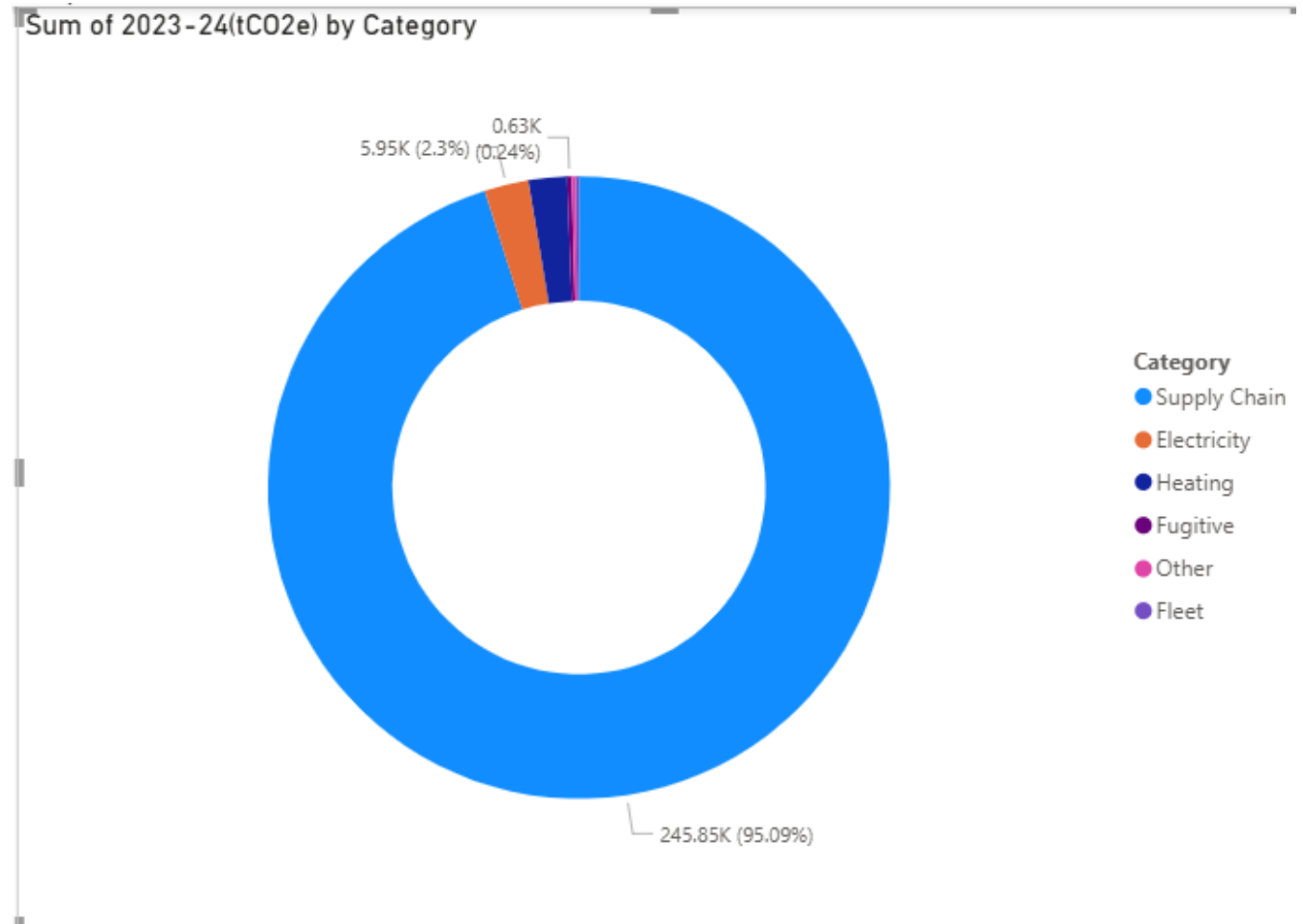
An external forum has been set up(though we are still encouraging more broader representation). The internal board for delivery of climate action plan is going through sign off process

We have signed up to the Bronze level of London food Purchase Commitment

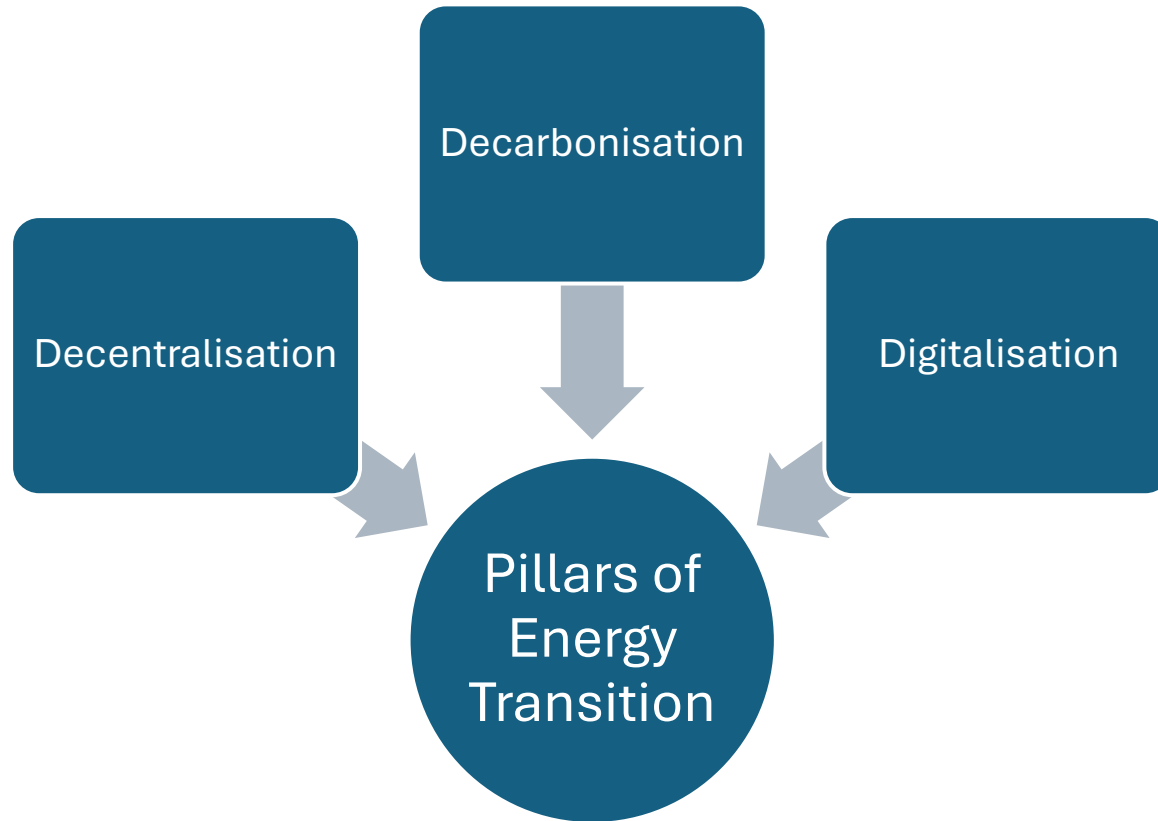
We have engaged with assets team to improve community energy prospects in the borough.

Key baselines

- Scope 1 and Scope 2 emissions
- Supply chain emissions
- Street lighting LED lighting/Dimming



LAEP – Local Area Energy Plan



Data-driven roadmap that identifies the most effective, low-carbon energy solutions tailored to a specific area's needs and future growth



Critically it identifies the '**what, where (and how many) and when**'.

LAEP –Story so far



GLA has funded Phase 1 of the LAEP



Boroughs were expected to carry out Phase 2



Provided funding support of 50K and 10K of technical expertise support



LAEP is part of the approved climate action plan









We are currently undergoing procurement for commissioning this piece of work

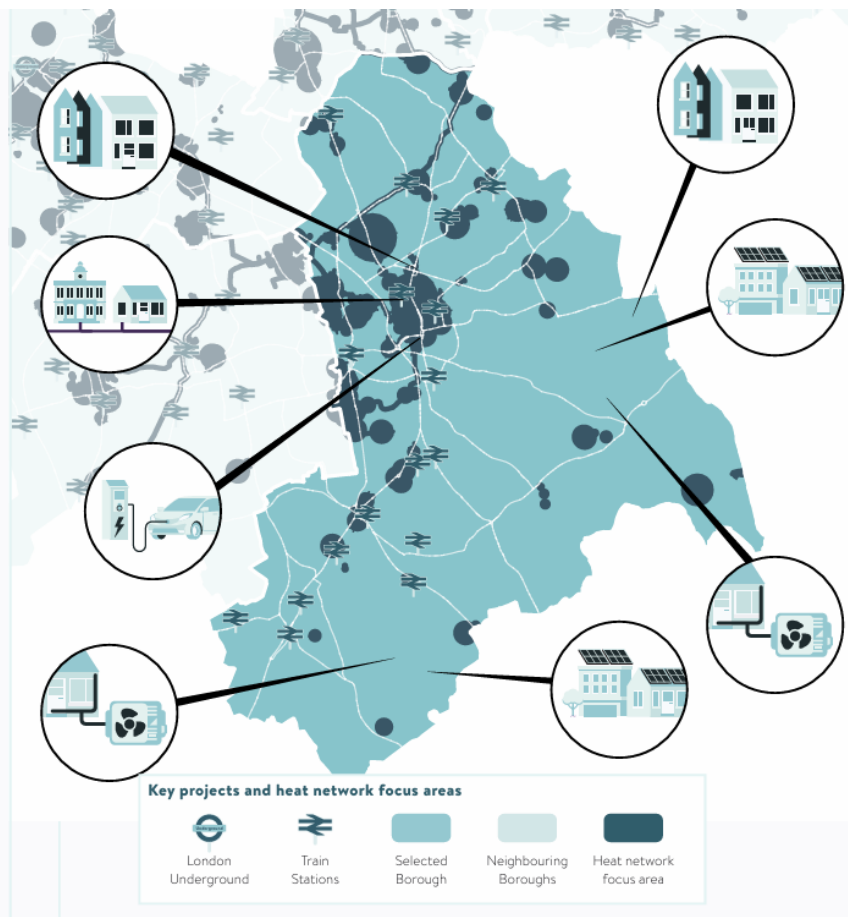
Phase 1 outputs of LAEP

CROYDON

Decarbonisation Pathway

This page provides a summary of the technologies chosen for the Net Zero 2040 scenario and recommendations. Key projects and recommendations are subject to the information available at the subregional level. Expected to be further evaluated and refined through Phase 2 LAEP and/or future feasibility stages.

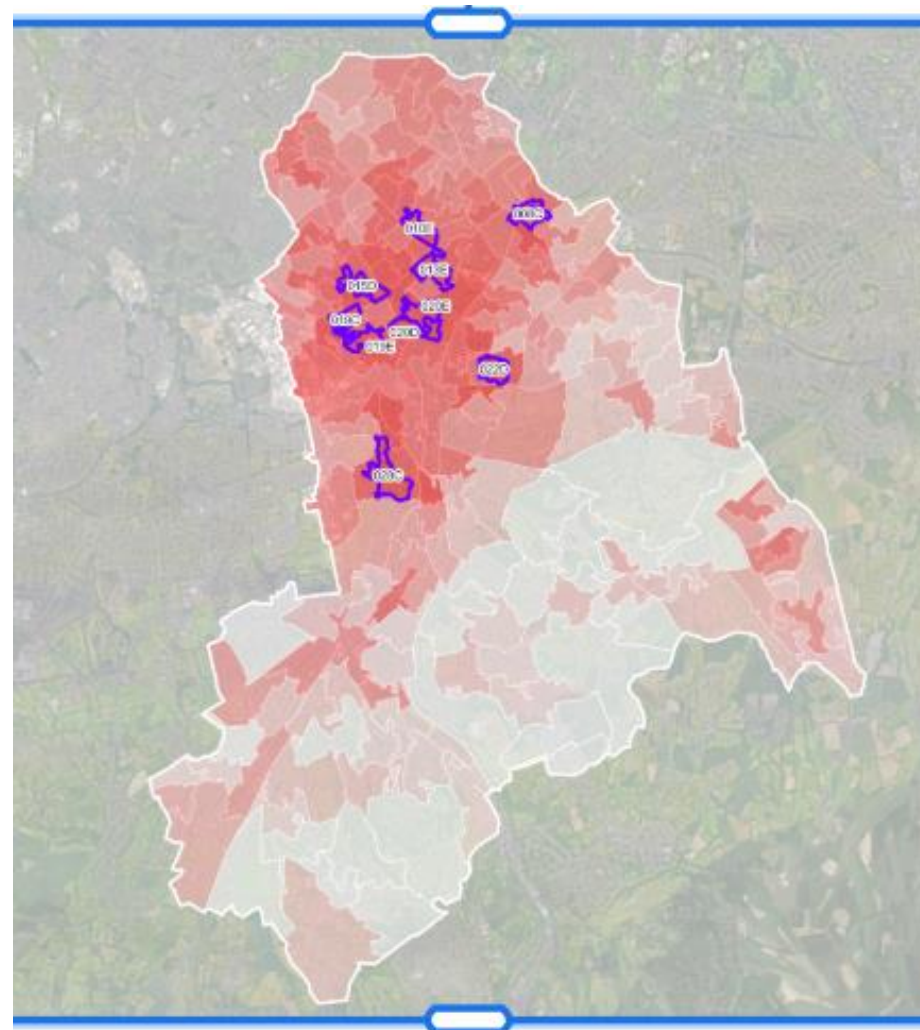
	Fabric retrofit (all domestic) 60% of total properties having some retrofit. Flats are the most common buildings flagged for fabric improvement - with 38,700 properties out of the 96,700 total retrofits being flats.	Energy Saving (GWh per year) 78	Carbon Saving (tCO ₂ e for year 2040) 18,200	Investment (GBP) 551m
	Fabric retrofit (social domestic) For social housing 54% of properties are flagged for needing some retrofit - with 9,300 being flats and 4,000 houses.	Energy Saving (GWh per year) 5	Carbon Saving (tCO ₂ e for year 2040) 1,200	Investment (GBP) 20m
	Heat network and communal Heat networks and communal systems are key - with 19,700 and 12,600 properties connecting respectively.	Heat Provided (GWh per year) 504	Carbon Saving (tCO ₂ e for year 2040) 83,700	Investment (GBP) 375m
	Heat pump Heat pumps focus in less heat dense areas, with 126,300 property level.	Heat Provided (GWh per year) 1,400	Carbon Saving (tCO ₂ e for year 2040) 304,700	Investment (GBP) 1,207m
	Rooftop PV There is 643 MW of rooftop PV potential of this 260 MW is deployed in the scenario.	Electricity Generated (GWh per year) 239	Carbon Saving (tCO ₂ e for year 2040) 3,800	Investment (GBP) 459m
	EV charging 47,400 domestic properties have access to off street charging. 6,700 onstreet onstreet chargers are required.	Capacity (MW per year) 647	Carbon Saving (tCO ₂ e for year 2040) 166,000	Investment (GBP) 108m



Climate Risk Assessment – Locational Analysis

10 most vulnerable LSOAs

- Croydon 010E Thornton Heath
- Croydon 013E Selhurst
- Croydon 019C Broad Green
- Croydon 020D Selhurst
- Croydon 015D West Thornton
- Croydon 020E Selhurst
- Croydon 008C South Norwood
- Croydon 028C Waddon
- Croydon 019E Broad Green
- Croydon 022D Addiscombe



Signed up to the London Food Purchase Commitment

Bronze

Engage and identify

1. Engage all relevant colleagues and teams.
2. Identify and prioritise food procurement contracts.
3. Start to act on priority contracts and report any activity that supports targets.

Silver

Measure and share

1. Gather the data from suppliers. This needs to be either 80% of direct food purchasing contracts or top 5 contracts.
2. Report your annual food purchasing/waste and provenance data
3. Engage, agree and share actions to be taken by food suppliers.

Gold

Action and influence

1. Report annual data, illustrating progress made against your baselines and the targets.
2. Implement the changes made by suppliers to food purchasing contracts.
3. Take steps to influence public institutions outside of direct control in your borough.

Bronze: engage and identify

Hounslow

Lambeth

Sutton (new signatory)

Croydon (new signatory)

Southwark (new signatory)

Silver: measure and share

Hackney

Barking and Dagenham

Gold: action and influence

Newham

Climate Literacy

- 17 staff and 12 councilors have attended climate risk
- 14 staff have attended the Climate Adaptation workshop



Next Steps



INTERNAL BOARD TO PICK
UP ACTION POINTS OF
CLIMATE SCORES AND THE
CAP



COMPLETE LAEP
PROCUREMENT AND BEGIN
THE WORK



CLIMATE ADAPTATION
MEASURES



LONDON FOOD PURCHASE
COMMITMENT



CONTINUE WITH CLIMATE
LITERACY

How can you help us?



Broader representation



Contribute to ideas of how council can work in partnership



Disseminate the information in your networks



Encourage people to be informed and participate in climate work to make it a resilient borough