

Kenley Community Plan

KENDRA AGM 1st May 2019

- Meet the team
- About the Project
- Process we are following
- Progress so far
- Next steps
- Any questions?



CROYDON
www.croydon.gov.uk

AOC



 **Commonplace**

SUPPORTED BY
MAYOR OF LONDON

Croydon Council's Regeneration team is overseeing the work carried out by the consultants and participating in community events. Once the Plan is complete, they will be coordinating the delivery of investment, subject to feasibility and funding availability.

AOC are architects who specialise in working with communities. They are working with Locality and Commonplace to ensure that the plan is representative of the residents of Kenley. They are running events and creating the final Community Plan.

Locality is a network is for organisations that believe in the power of local communities to build a fairer society. They are undertaking research and engagement with the Kenley community that will form the basis of the Community Plan.

Commonplace is an on-line engagement tool that is being used to create a survey that will help the community to provide feedback to inform the development of the Community Plan.

The development of the Community Plan is being funded by the GLA's Good Growth Fund

Context

- Due to the shortage of housing in London and the Southeast, more homes are being built across Croydon and this increased growth is likely to continue in the future.
- Croydon's Local Plan (2018) and recently adopted Suburban Design Guide (SPD2) are guiding development in the suburbs.

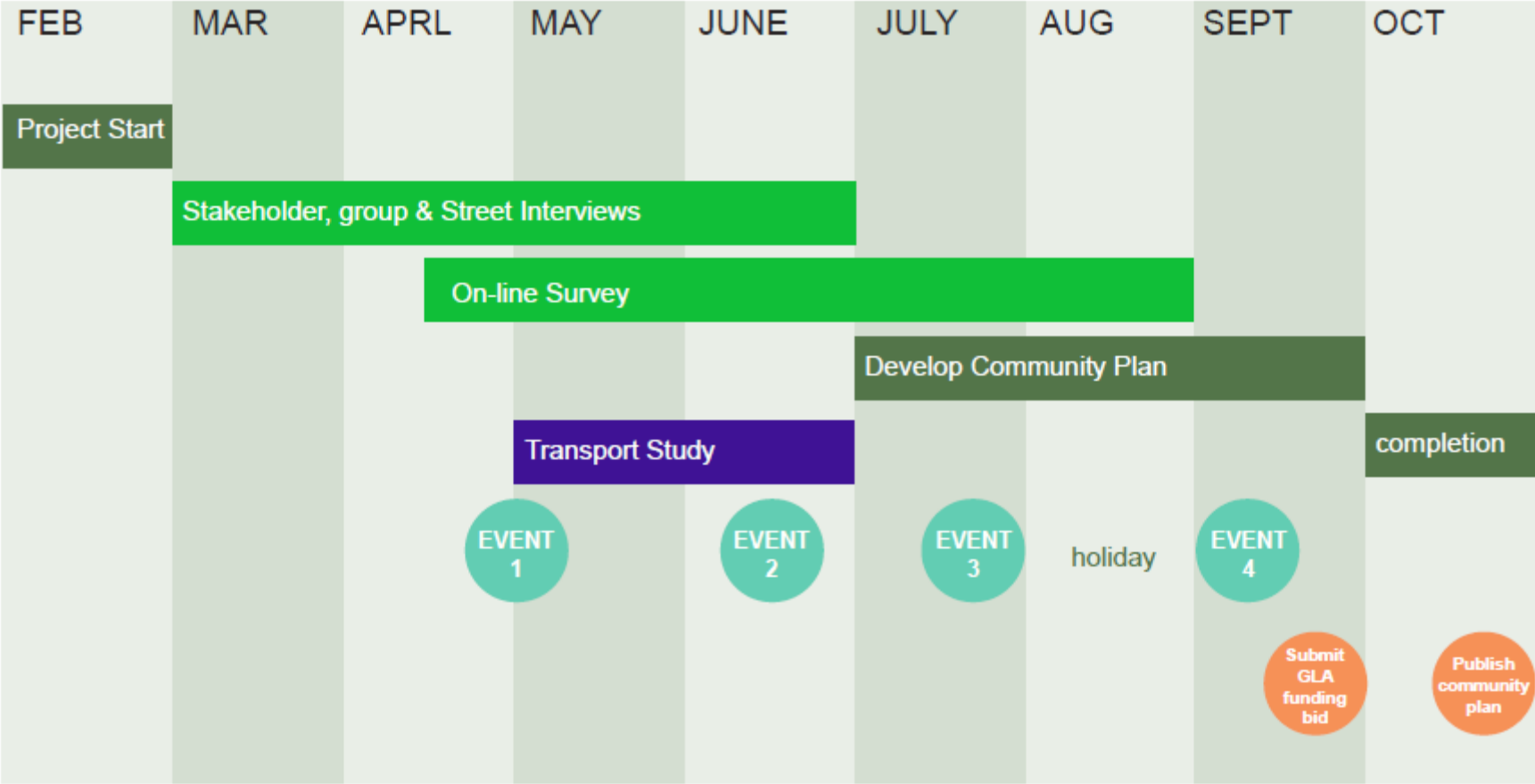
The Kenley Community Plan

- A 20-year vision for the neighbourhood identifying the community's priorities for investing in their services and facilities to ensure Kenley evolves in a way that local people want.
- The Plan
 - Will be used by the council to inform investment priorities and support funding applications
 - By the Planning Department as evidence towards the review of the Local Plan and to inform discussions with potential developers
 - Can support local community fundraising efforts.

A dark green circular logo with the text "Kenley Community Plan" in white, stacked vertically.

Kenley
Community
Plan

The process we are following



We have been busy this Spring...

Locality have been leading a range of community engagements across Kenley, including;

- A tour with KENDRA
 - 19 stakeholder interviews + more planned
 - 144 Resident Interviews
 - 2 focus groups
- + 1 more youth focus group planned

Interviews will continue through May and June - helping us gain an understanding of your area and your issues. We are trying hard to make sure we speak to people from all over the ward.

We want to ensure that our survey represents Kenley

We need to hear more from;

- men
- young people
- businesses, workers and commuters

A dark green circular logo with the text "Kenley Community Plan" in white, stacked vertically.

**Kenley
Community
Plan**

What people like about Kenley, feedback so far *of the people interviewed*

65% respondents identified **green aspect** as a positive aspect of living in Kenley. People talked about the rural feel and the quietness of the area.

33% identified the **local community** as a positive, describing a strong sense of identity and local activities as strengths.

33% also identified **transport connections** as a positive, describing it as accessible with proximity to Croydon and central London.

A dark green circular logo with the text "Kenley Community Plan" in white, stacked vertically.

**Kenley
Community
Plan**

Emerging key issues *of the people interviewed*

We asked people to identify the biggest issues facing the community in Kenley. The most commonly identified were:

- **Housing, infrastructure and amenities** (46%) - relating to over-development and lack of amenities, particularly shops.
- **Streets** (38%) - relating primarily to parking and congestion.
- **Community** (25%) - with concerns around loss of community the most frequently mentioned issue

Priority improvements we have heard about so far *of the people interviewed*

The key priorities were:

- **Housing, infrastructure and amenities** (33%) – with the majority of respondents identifying over-development as their main concern.
- **Streets** (31%) – addressing parking and pedestrian safety.
- **Youth** (26%) – need for more activities and facilities.
- **Transport** (20%) – including more and better bus services
- **Community** (17%) – community spaces and activities

Next events

Community Event 2: Thursday June 6th, 3.00 pm till 8.00 pm
At Old Lodge Lane Baptist Church Hall.

Community Event 3: Saturday July 20th, 1.00 pm till 5.00 pm
At Kenley Aerodrome (exact location tbc)

Community Event 4: Wednesday September 11th, 3.00 pm till 7.00 pm
At Kenley Memorial Hall.



Kenley Community Plan

Take the survey

<https://kenleycommunitymap.commonplace.is/>

Find out more

www.croydon.gov.uk/kenleycommunity

Contact the team

kenleycommunity@croydon.gov.uk

