



# 1. Welcome to this public exhibition for Selsdon

## Join the conversation about Selsdon and the Community Plan

### Who we are?

We are a project team made up of local groups, churches, ward councillors, Croydon Council, local businesses and schools. We were set up on the 22nd July 2019.

We are hosting a Community Event on 9 November 2019 to start a conversation with the community about your priorities for improving Selsdon.

There will be other opportunities for the community to give your input before we publish a Selsdon Community Plan in the Summer of 2020.

### What we are doing & why?

#### Our core aims

We aim to change our community for the better by:-

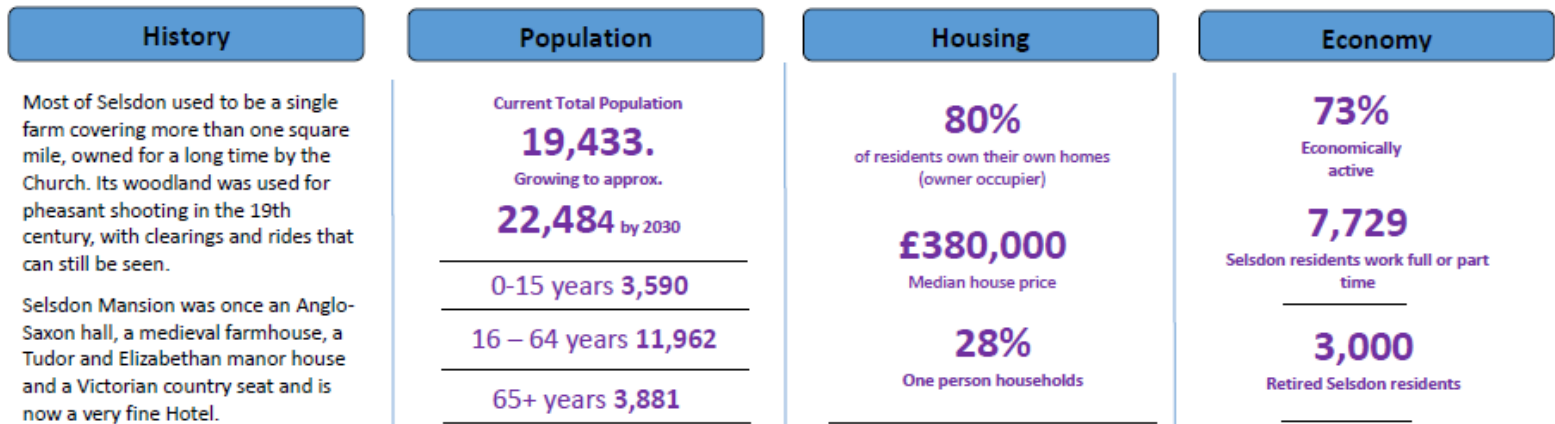
- o Building a pleasant, modern, healthy environment respectful of our heritage, fit for our future
- o Nurturing sustainable local businesses to secure high quality jobs for local people
- o Creating a connected, collaborative, welcoming community of which residents are proud

### How to Get Involved!

VISIT THE SELSDON REGENERATION WEB PAGE FOR MORE INFORMATION

[www.croydon.gov.uk/SelsdonCommunityPlan](http://www.croydon.gov.uk/SelsdonCommunityPlan)

To contact our project team, or join our mailing list, please send us an email at; [selsdoncommunityplan@gmail.com](mailto:selsdoncommunityplan@gmail.com)



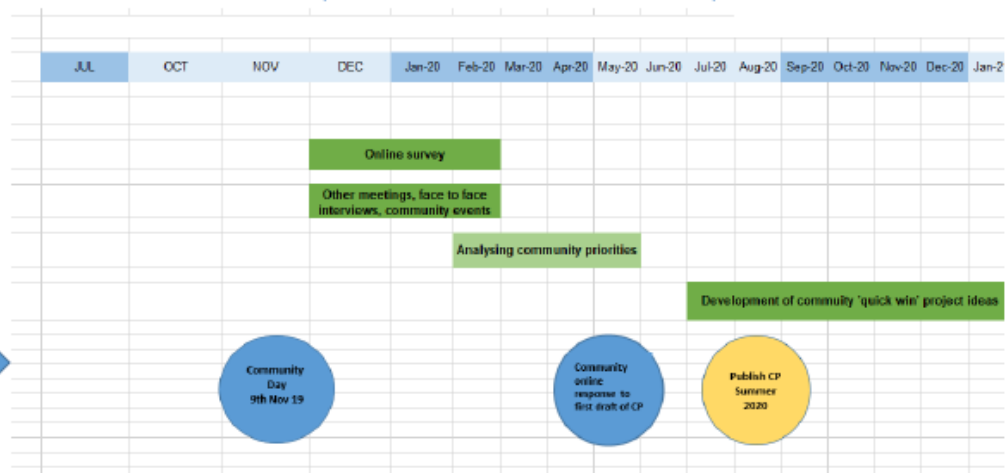
In 1538 King Henry VIII gave the manor to his financial advisor Sir John Gresham and it is believed the King stayed there whilst secretly courting Anne Boleyn who was staying nearby.

Selsdon station – which closed in 1983 (when it was still lit by gas lamps) – was nowhere near here. Opened in 1885 as Selsdon Road, it was on the unsuccessful Woodside and South Croydon Railway.

Founded in 1874, Croydon High School moved to a 20-acre site north of the Selsdon Park hotel in 1966 and has since added several more buildings.



### The Selsdon Community Plan Timeline







# 4.

# Greening & Local Open Space

Join the conversation about Selsdon and the Community Plan



Anything missing on map?

**Conservation Reserve**

**Anything missing on map?**

ADDINGTON CRICKET CLUB  
ADDINGTON PARK  
ADDINGTON PALACE & GOLF CLUB  
AREA OF GROWTH (CFIZ)  
WAR MEMORIAL  
ADDINGTON POLICE STATION  
ADDINGTON TRAM STOP  
FORESTDALE SHOPPING AREA  
FORESTDALE FORUM  
SELSDON WARD  
SELSDON REEL  
SELSDON PARK ROAD SHOPS  
SELSDON COMMUNITY CENTRE  
SELSDON HIGH SCHOOL  
SELSDON SHOPPING AREA  
VILLAGE CLUB  
MONKES HILL ESTATE  
TRAVEL HILL TRAM STOP  
EDGEHURST PLAYGROUND  
LITTLE HEATH WOODS  
GRAHAM AUST WOOD  
SITE OF NATURE CONSERVATION INTERESTS  
250 ADDINGTON RD  
SELSDON REEL  
SELSDON WARD  
PLAYGROUND REDEVELOPMENT  
SITES OF NATURE CONSERVATION IMPORTANCE  
DE TREE SELSDON ESTATE  
FITNESS CLUB  
HEALTHY LIFESTYLE HISTORICAL PARKS & GARDENS

WRITE YOUR IDEAS

## What are your priorities?

Write them down on the post it note and stick it here

(Please note: Priorities can only go forward subject to feasibility and funding)

## Potential Ideas

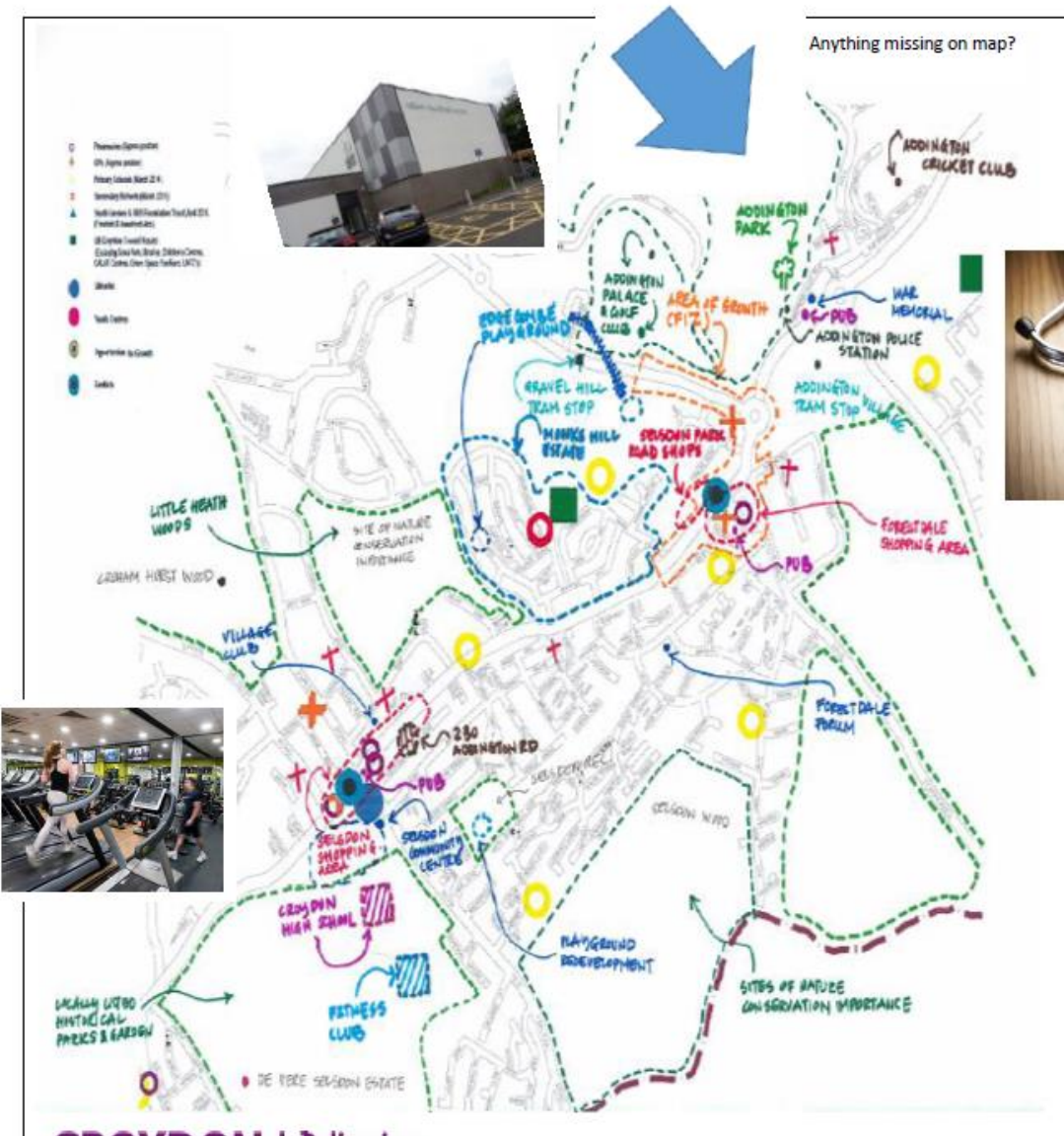
Do you have any specific ideas for projects relating to this topic? For example, these are ideas we have heard about already; Provide community gardens for food production, Improve signage and wayfinding to nature conservation areas/walks



# 6.

# Health, Wellbeing & Sports

Join the conversation about Selsdon and the Community Plan



Anything missing on map?

## What are your priorities?

Write them down on the post it note and stick it here

(Please note: Priorities can only go forward subject to feasibility and funding)

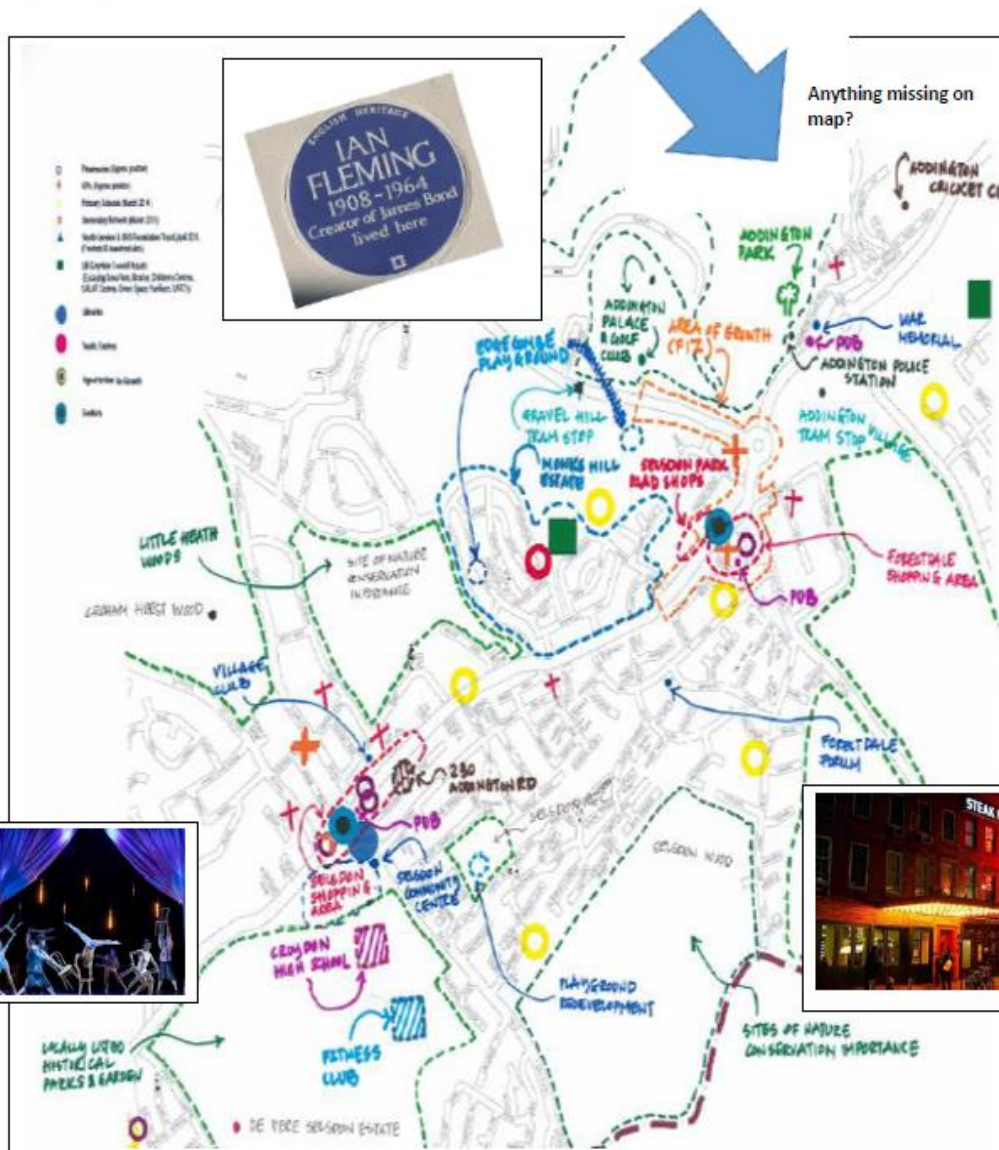


## Potential Ideas

Do you have any specific ideas for projects relating to this topic? For example, these are ideas we have heard about already; Space and facilities for health & wellbeing programmes; an affordable gym on high street



# 7. Culture, restaurants and local entertainment



## What are your priorities?

Write them down on the post-it note and stick it here

(Please note: Priorities can only go forward subject to feasibility and funding)

## Potential Project Ideas

Do you have any specific ideas for projects relating to this topic? For example, these are ideas we have heard about already: Blue plaques on shops showing past usage, Selsdon work experience scheme; Reviving the Broadway and Selsdon Parade as identities, All about Selsdon Shop



# 8.

## What do you Like and what would you Improve about Selston?



Join the conversation about Selston and the Community Plan

**LIKE**

**IMPROVE**



# 9. Some 'Quick Win' ideas: Tell us what you think

Join the conversation about Selsdon and the Community Plan



Quick Win ideas are potential projects that we think that can be delivered within 18 months.

## Public Art / Sculpture



Like a lot



Dot here

Like



Dot here

Don't Like



Dot here

## Christmas Market



Like a lot



Dot here

Like



Dot here

Don't Like



Dot here

## More planting on high street



Like a lot



Dot here

Like



Dot here

Don't Like



Dot here

## Better signage to Selsdon areas of historic interest



Like a lot



Dot here

Don't know



Dot here

Don't Like



Dot here

